

Please read and save these instructions. Read through this owner's manual carefully before using product. Protect yourself and others by observing all safety information, warnings, and cautions. Failure to comply with instructions could result in personal injury and/or damage to product or property. Please retain instructions for future reference.



AIR OPERATED STRUT COMPRESSOR

FOR CUSTOMER SERVICE

Technical Question?

CALL 1-866-458-2472

customerservice@oem-tools.com

UNPACKING

After unpacking unit, inspect carefully for any damage that may have occurred during transit. Check for loose, missing, or damaged parts. If any damage is observed, a shipping damage claim must be filed with carrier. Do not use Strut Compressor if broken, bent, cracked or damaged parts (including labels) are noted. Any Strut Compressor that appears damaged in any way, operates abnormally or is missing parts should be removed from service immediately. If you suspect that the Strut Compressor was subjected to a shock load (a load that was dropped suddenly, unexpectedly, etc.) immediately discontinue use until it has been checked by a factory authorized service center.



⚠ WARNING

The following safety information is provided as guidelines to help you operate your Air Operated Strut Compressor under the safest possible conditions. Any tool or piece of equipment can be potentially dangerous to use when safety or safe handling instructions are not known or not followed. The following safety instructions are to provide the user with the information necessary for safe use and operation. Please read and retain these instructions for the continued safe use of your service system. Failure to follow instructions listed below may result in serious injury. In addition, make certain that anyone that uses the equipment understands and follows these safety instructions as well.

WARNING: This product contains chemicals known to the State of California to cause cancer and birth defects or other reproductive harm.

Explanation of Safety Signal Words

⚠ WARNING : Indicates a potentially hazardous situation which, if not avoided, could result in death or serious injury.

⚠ CAUTION : Indicates a potentially hazardous situation which, if not avoided, may result in minor or moderate injury.

CAUTION : Used without the safety alert symbol indicates a potentially hazardous situation which, if not avoided, may result in property damage.

Notes : Provide clarity and helpful information.



AIR OPERATED STRUT COMPRESSOR

Thank you very much for choosing an OEMTOOLS Product!

For future reference, please complete the owner's record below:

Model: _____ **Purchase Date:** _____

Save the receipt, warranty and these instructions. It is important that you read the entire manual to become familiar with this product before you begin using it. This machine is designed for certain applications only. OEMTOOLS cannot be responsible for issues arising from modification. We strongly recommend this machine is not modified and/or used for any application other than that for which it was designed. If you have any questions relative to a particular application, DO NOT use the machine until you have first contacted OEMTOOLS to determine if it can or should be performed on the product.

For technical questions please call 1-866-458-2472.



IMPORTANT INSTRUCTIONS AND SAFETY RULES

1. Know your tool. Read this manual carefully. Learn the tool's applications and limitations, as well as, potential hazards specific to it.
2. Keep work area clean and well lit. Cluttered or dark work areas invite accidents.
3. Keep children away. All children should be kept away from the work area. Never let a child handle a tool without strict adult supervision.
4. Do not operate this tool if under the influence of alcohol or drugs. Read warning labels on prescriptions to determine if your judgment or reflexes are impaired while taking drugs. If there is any doubt, do not attempt to operate.
5. Use safety equipment. Eye protection should be worn at all times when operating this tool. Use ANSI approved safety glasses. Everyday eyeglasses are NOT safety glasses. Dust mask, non-skid safety shoes, hard hat or hearing protection should be used in appropriate conditions.
6. Wear proper apparel. Loose clothing, gloves, neckties, rings, bracelets or other jewelry may present a potential hazard when operating this tool. Keep all apparel clear of the tool.
7. Don't overreach. Keep proper footing and balance at all times when operating this tool.
8. Check for damage. Check your tool regularly. If part of the tool is damaged it should be carefully inspected to make sure that it can perform its intended function correctly. If in doubt, the part should be repaired. Refer all servicing to a qualified technician. Consult your dealer for advice.
9. Keep away from flammables. Do not attempt to operate this tool near flammable materials or combustibles. Failure to comply may cause serious injury or death.
10. Store idle tools out of the reach of children and untrained persons. Tools may be dangerous in the hands of untrained users.
 - Maintain tools with care.
 - Keep tools dry and clean.
 - Properly maintained tools are less likely to bind and are easier to control. Do not use a damaged tool. Tag damaged tools "Do not use" until repaired.
 - Check for misalignment or binding of moving parts, breakage of parts, and any other condition that may affect the tool's operation.
 - If damaged, have the tool serviced before using. Many accidents are caused by poorly maintained tools.
 - Use only accessories that are recommended by the manufacturer for your model. Accessories that may be suitable for one tool may become hazardous when used on another tool.
 - Tool service must be performed only by qualified repair personnel. Service or maintenance performed by unqualified personnel could result in a risk of injury.
 - When servicing a tool, use only identical replacement parts. Use of unauthorized parts or failure to follow maintenance instructions may create a risk of injury.
 - Maintain a safe working environment. Keep the work area well lit. Make sure there is adequate surrounding workspace. Keep the work area free of obstructions, grease, oil, trash, and other debris. Do not use this product in a damp or wet location.
 - Maintain labels and nameplates on this product. These carry important information. If unreadable or missing, contact OEMTOOLS for a replacement.
 - Keep the handle dry, clean, and free from brake



AIR OPERATED STRUT COMPRESSOR

fluid, oil, and grease.

- Before use, read and understand all warnings, safety precautions, and instructions as outlined in the vehicle manufacturer's service manual. It is beyond the scope of this manual to properly describe the correct procedure and test data for each vehicle.
- Always perform vehicle service in a properly ventilated area. Never run an engine without proper ventilation for its exhaust. Stop work and take necessary steps to improve ventilation in the work area if you develop momentary eye, nose, or throat irritation as this indicates inadequate ventilation.
- Engine parts that are in motion and unexpected movement of a vehicle can injure or kill. When working near moving engine parts, wear snug fit clothing and keep hands and fingers away from moving parts. Keep hoses and tools clear of moving parts. Always stay clear of moving engine parts. Hoses and tools can be thrown through the air if not kept clear of moving engine parts.
- The unexpected movement of a vehicle can injure or kill. When working on vehicles always set the parking brake or block the wheels.
- Avoid accidental fire and/or explosion. Do not smoke near engine fuel and battery components.
- The warnings, precautions, and instructions discussed in this manual cannot cover all possible conditions and situations that may occur. The operator must understand that common sense and caution are factors which cannot be built into this product, but must be supplied by the operator.
- For safety purposes and the prevention of damage to expensive components it is advised that the user have an understanding of basic automotive repair and a working knowledge of automotive systems.
- We believe the information contained herein to be reliable. However, general technical information is given by us without charge and the user shall employ such information at their own discretion and risk. We assume no responsibility for results or damages incurred from the use of such information in whole or in part. Always refer to specific instructions and technical information supplied by vehicle manufacturer.
- The manufacturer declines any and all responsibility for damage to vehicles or components if said damage is the result of unskillful handling by the operator or of failure to observe the basic safety rules set forth in the instruction manual.
- This equipment is intended only for professional use by personnel trained in performing the service functions for which it has been designed.
- This equipment is designed for servicing a variety of vehicles in a safe, convenient manner. However, differences in vehicle makes and models may make it impossible to use this equipment as it is intended. Do not attempt to force the use of this equipment on an application for which it is not designed to perform.
- The procedures documented in this manual are to serve as guidelines for the use of this equipment.
- In addition to these guidelines, always follow the manufacturer's recommended procedures when servicing each unique vehicle.
- The use of this equipment is simple and straightforward if you follow the instructions. When operating this equipment, use common sense, and always stop to think before using a Strut Compressor or lifting a vehicle.

⚠ WARNING

Spring compression creates a potentially dangerous situation because of the energy stored between the spring mounts. Failure to correctly position the strut assembly in the tool could result in serious injury from a sudden release of strut assembly parts. To prevent personal injury.

- Study, understand, and follow the safety precautions and operating instructions included with the strut spring compressor. If the operator cannot read these instructions, operating instructions and safety precautions must be read and discussed in the operator's native language.
- Wear eye protection that meets ANSI Z87.1 and OSHA standards.
- Use this equipment for automotive strut springs only.
- Check the condition of the strut spring compressor before each use; do not use the equipment if it is damaged, worn, or modified.
- Align the strut assembly before compressing. The spring should be parallel to the forcing screw and on the centerline of the foot support.
- Release and reposition the strut assembly if it is difficult to compress the spring, or if the spring bows.



AIR OPERATED STRUT COMPRESSOR

- Compress the spring only until it is loose in its mounts.
- Stop compressing if the spring or the arms bottom out.
- Do not remove the piston rod nut until the spring is compressed enough to be loose in the mount.

SPECIFICATIONS

Maximum Load 2200 Lbs.

Upper Yoke Travel 16.5"

Spring Diameters 4-6.5"

Operation

Foot Controlled Valve

Maximum Air Pressure 116 Psi

PRODUCT DESCRIPTION

Quickly, easily, and safely compress and remove springs for replacement and repair of automotive strut components. This Strut Compressor comes with two interchangeable plastic coated lower yokes and a suspension strut clamp. It fits a wide range of spring configurations and diameters. Also features a strut locating platform for easy movement of the strut to avoid unnecessary lifting.

NEVER use for any purpose other than those uses outlined above!

⚠ WARNING

- Verify that the product and application are compatible, if in doubt call OEMTOOLS at 1-866-458-2472.
- Before using this product, read the operator's manual completely and familiarize yourself thoroughly with the product, its components and recognize the hazards associated with its use.
- Wear appropriate safety gear, including heavy-duty work gloves and ANSI-approved safety goggles during use.
- Do not exceed the capacity of the Strut Compressor. Make sure load is evenly distributed. Be aware of dynamic loading! Sudden load movement may briefly create excess load causing product failure. Exceeding the maximum capacity for this product is dangerous and can lead to serious injury or property damage.

- Always evaluate your task before using this Strut Compressor. Use as intended only.

⚠ WARNING

- If you are working and the load becomes off-balance and/or the Strut Compressor begins to tip over, DO NOT ATTEMPT TO CATCH OR LIFT THE LOAD WHEN FALLING. SERIOUS PERSONAL INJURY CAN RESULT! In this event, clear the area as quickly and safely as possible in order to avoid injury from the falling load, including getting hit with flying fragments.
- Before each use, inspect the general condition of the Strut Compressor. If a problem occurs, have the problem corrected before further use.

⚠ WARNING

- TO PREVENT SERIOUS INJURY: DO NOT USE A DAMAGED OR MALFUNCTIONING STRUT COMPRESSOR.
- If in doubt about the safety of your project, we advise you to have the work done by a professional familiar with applicable safety practices.

ASSEMBLY

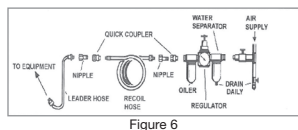
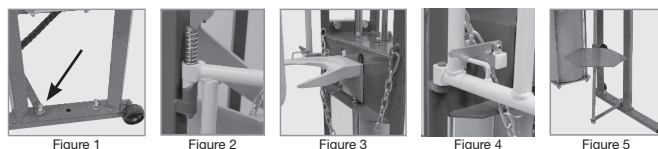
Unpack the spring compressor carefully; it will be necessary for two people to do this.

1. Lay out all of the parts ready for assembly.
2. Fit the two feet to the bottom of the frame with the wheels facing rearwards. Use four allen bolts, flat washer, spring washers and domed nuts to secure in place.
3. NOTE: the longer bolt is installed in the position shown in (Fig. 1).
4. Using the help of another person, stand the unit onto its feet taking care when the wheels come into contact with the floor as the unit might become unstable.
5. Attach the guard lock to the front of the unit using four cross headed bolts (Fig. 4).
6. Attach the guard by dropping it into the bottom pivot and then fitting the large pin and spring into the top pivot holes and installing a nylon nut (Fig. 2). Some pressure will be needed to push down on the pin to allow the nut to be threaded.
7. Fit the chain to the left hand side using a nut and bolt. Remove the clip from the end of the chain and clip it on the hook on the other side of the compressor, the chain can then be attached to the clip at the appropriate link as required (Fig. 3).



AIR OPERATED STRUT COMPRESSOR

8. Install the locating platform by threading it onto the long metal rod and securing it by attaching the knob. The top of the rod fits through the hole in the frame and is held in place using a domed nut and washer. The bottom of the rod is secured by attaching the metal arm to it and securing with a nut. Then undo the domed nut previously installed (Fig. 1) and install the metal arm over the bolt and reinstall the domed nut. Tighten all nuts in turn ensuring that the metal rod hangs vertically from the frame also squarely to the metal arm (Fig. 5).
9. Install the handle to the top of the unit using two domed nuts, spring washers and washers.
10. There are pre-drilled holes in the feet to bolt the unit to the floor if desired.
11. Hang two of the strut brackets to the sides of the frame and locate the third bracket on the compressor using the locking pin to hold it in position (Fig. 7).
12. Position the unit in a suitable location near an air supply.
13. The recommended air hook-up procedure is shown in (Fig. 6).
14. Ensure the foot control lever is in the "Off" position before connecting to the air supply.
15. Maximum Air Pressure is 116 Psi.



⚠ WARNING

Ensure the air supply is clean and dry and does not exceed 116 Psi. Too high pressure, moisture or trash in the line will shorten the life of the compressor and may be dangerous, causing damage or personal injury.

OPERATION

Compressing and disassembling a Strut Spring

⚠ WARNING

Note: Before removing the strut from the vehicle it is recommended that the upper strut lock plate nut be loosed a quarter turn. DO NOT loosen more than

a quarter turn. Do not loosen if loosening may release the nut from shaft.

Use extreme care when working with a compressed spring.

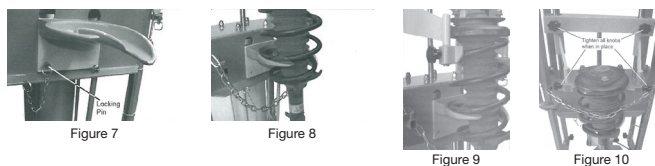
Spring compression creates a potentially dangerous situation because of the energy stored between the spring mounts. Failure to correctly position the strut assembly in the tool could result in serious injury from a sudden release of strut assembly parts. To prevent personal injury.

Never remove the piston rod nut when there is any spring pressure on the lower spring seat.

Release and reposition the strut assembly if it is difficult to compress the spring, or if the spring bows.

Compress the spring only until it is loose in its spring mounts. Stop compressing if the spring or the arms bottom out.

Do not remove the piston rod nut until the spring is compressed enough to be loose in the mount.



1. With the strut and spring assembly removed from the vehicle, select the most suitable sized bracket or the strut clamp depending on the size of the spring and install it into the compressor using the locking pin to hold it (Fig. 7).
2. Position the lowest coil of the spring in the lower bracket and rotate the strut and spring so that the coil is held as low as possible.
3. Swing the small upper arms into position and locate the upper brackets on the uppermost coil (Fig. 9). Ensure that the coil is placed inside the recesses of the brackets to ensure that the coil will not break free under compression.
4. After correctly positioning the spring on the lower and upper brackets, tighten all the locking knobs (Fig. 10).
5. Relocate the locating platform if required, so that it is just underneath the bottom of the strut and secure it in place.



AIR OPERATED STRUT COMPRESSOR

6. Use the chain to secure the spring by pulling it across the spring and hooking it onto the clip. Shut the safety guard ensuring that it locks in place.
7. Check to make sure the spring is safely secured and then start to compress the spring coils. Gradually press the foot pedal to start the compression, stopping to check that the spring is still securely held.

⚠ WARNING

Keep Hands and Feet away from the spring while compressing. Stop Compressing the spring before the coils bottom out (touch each other).

DO NOT OVER COMPRESS THE SPRING!

If the strut assembly is not positioned correctly in the jaws, it is possible that the strut retaining cap could be subject to sideways forces. Watch closely as the spring reaches its full compression and ensure the retaining cap assembly rotates freely before attempting to remove it.

8. When the strut is loose within the spring, unscrew the strut locking plate nut and remove the locking plate from the top of the strut, gradually release the pressure on the spring by operating the foot pedal. When all the pressure has been released take care to support the strut and spring assembly. Move the platform and remove the strut and release spring from the brackets if needed.

Strut Reassembly.

1. With the spring properly installed in the brackets as described in steps 1-6, insert the strut inside the spring and move the locating platform just underneath the bottom of the strut to support and secure it in place by turning the knob.
2. Use the chain to secure the spring by pulling it across and hooking the clip. Shut the safety guard, ensuring that it locks in place.
3. Compress the spring using the foot control pedal, ensuring that the spring is securely held in place and located properly with the bracket recesses at all times.

⚠ WARNING

Keep Hands away from the spring while compressing. Stop Compressing the spring before the coils bottom out (touch each other).

4. Once the spring is sufficiently compressed, install the lock plate to the strut and using a new nut secure it into position. **NUT MUST BE FULLY ENGAGED ON PISTON ROD THREADS!**
5. Decompress the spring carefully and slowly, using the foot pedal, stopping to ensure the spring locates properly in the strut housing and lock plate.
6. Remove the strut spring assembly from the spring compressor.
7. After reinstalling the strut to the vehicle the lock plate nut will need to be tightened to manufacturer's specs using a torque wrench. Follow manufacturer's guidelines. Your application may require special tools, not included.

⚠ CAUTION

Use caution when troubleshooting a malfunctioning Strut Compressor. Stay well clear of the supported load. Completely resolve all problems before use. If the Strut Compressor is malfunctioning, have a qualified technician inspect and repair the Strut Compressor before use.

MAINTENANCE

A periodic coating of light lubricating oil to pivot points, adjusting points, etc. will help to prevent rust and assure that all components move freely. Disconnect the air supply when not in use. If the compressor will be stored and not used for a while, drop a little air tool oil into the air inlet and cover to protect from debris.

Storage

Always store the Strut Compressor in a well-protected area where it will not be exposed to inclement weather, corrosive vapors, abrasive dust, or any other harmful elements.



AIR OPERATED STRUT COMPRESSOR

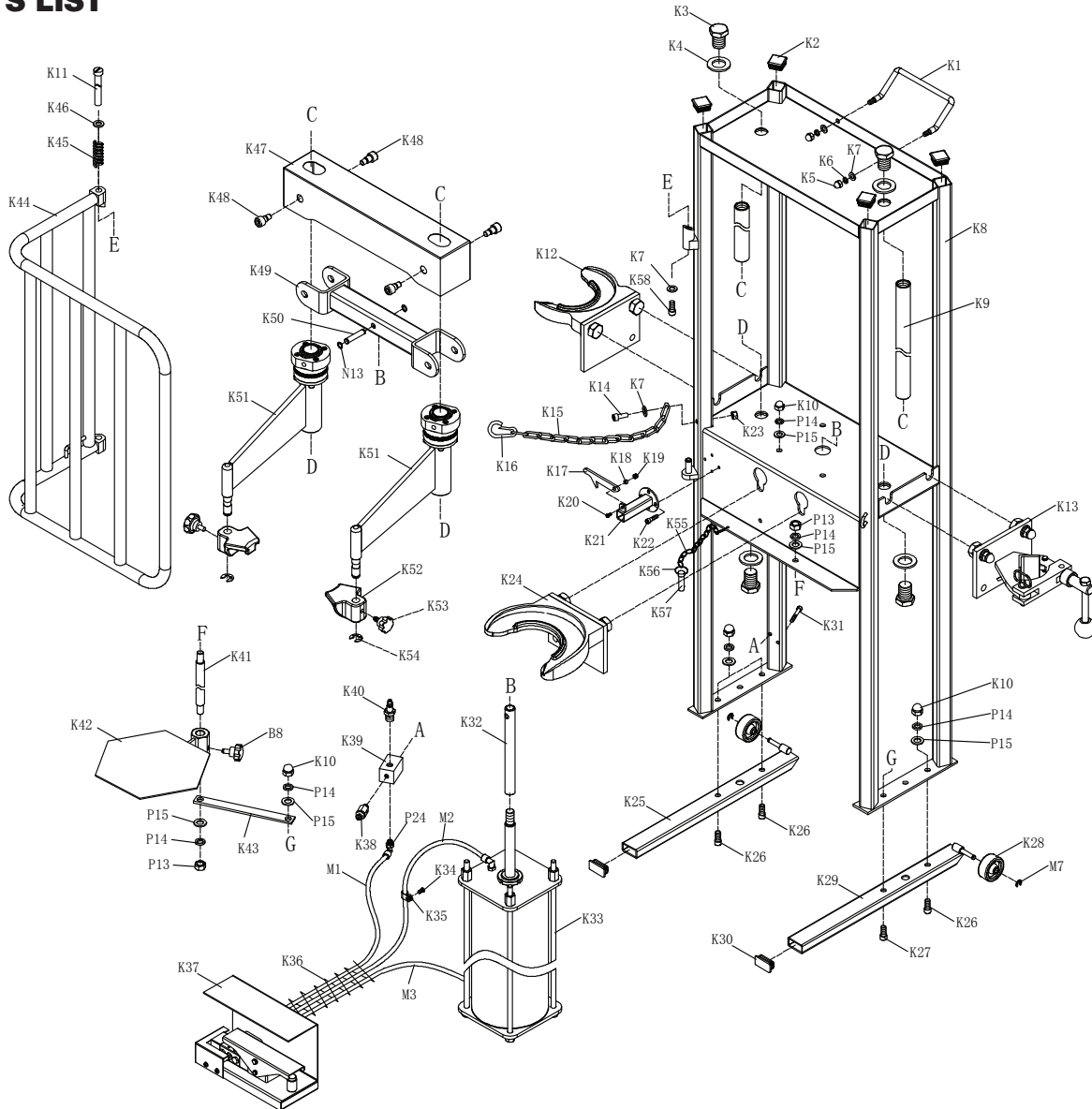
PARTS LIST

FIGURE	DESCRIPTION	QTY	FIGURE	DESCRIPTION	QTY	FIGURE	DESCRIPTION	QTY
24860-K1	Handle	1	24860-K24	Lower Strut Support	1	24860-K47	Moving Arm Cover	1
24860-K2	End Plug	4	24860-K25	Base(1)	1	24860-K48	Bolt	2
24860-K3	Washer	4	24860-K26	Bolt	3	24860-K49	Beam Assembly	1
24860-K4	Bolt	4	24860-K27	Bolt	4	24860-K50	Locking Pin	1
24860-K5	Nut	2	24860-K28	Wheel	2	24860-K51	Moving Arm	1
24860-K6	Lock Washer	2	24860-K29	Base(2)	1	24860-K52	Support	1
24860-K7	Washer	4	24860-K30	End Plug,Base	2	24860-K53	Knob Screw	1
24860-K8	Frame Assembly	1	24860-K31	Bolt	2	24860-K54	Split Washer	1
24860-K9	Bar	2	24860-K32	Connection Rod for Air Cylinder	1	24860-K55	Chain	1
24860-K10	Nut	8	24860-K33	Air Cylinder Assembly	1	24860-K56	Ring	2
24860-K11	Pin	1	24860-K34	Bolt	4	24860-K57	Pin For Chain	1
24860-K12	Upper Strut Support	1	24860-K35	Hose Clip	4	24860-K58	Bolt	1
24860-K13	Control Assembly	1	24860-K36	Protective Casing	1	24860-P13	Nut	2
24860-K14	Bolt	1	24860-K37	Foot Pedal	1	24860-P14	Lock Washer	6
24860-K15	Chain	1	24860-K38	Safety Valve	1	24860-P15	Washer	6
24860-K16	Shackle	2	24860-K39	Valve Block	1	24860-M1	Hose 1	1
24860-K17	Hook	1	24860-K40	Valve Block Connector	1	24860-M2	Hose 2	1
24860-K18	Copper Bushing	1	24860-K41	Shaft For Plate	1	24860-M3	Hose 3	1
24842-K19	Nut	1	24860-K42	Plate	1	24860-M7	Split Washer	2
24860-K20	Bolt	1	24860-K43	Connecting Rod	1	24860-N13	Retaining Ring	2
24860-K21	Hook Assembly	1	24860-K44	Safety Locking Guard	1	24860-P24	Hose Connector	1
24860-K22	Bolt	4	24860-K45	Spring	1			
24860-K23	Nut	1	24860-K46	Washer	1			



AIR OPERATED STRUT COMPRESSOR

PARTS LIST



Note: Not all components of the Strut Compressor are replacement items, but are illustrated as a convenient reference for location and position in the assembly sequence.

The manufacturer and/or distributor have provided the parts list and assembly diagram in this manual as a reference tool only. Neither the manufacturer nor distributor makes any representation or warranty of

any kind to the buyer that he or she is qualified to make any repairs to the product, or that he or she is qualified to replace any parts of the product. In fact, the manufacturer and/or distributor expressly states that all repairs and parts replacements should be undertaken by certified and licensed technicians, and not by the buyer. The buyer assumes all risk and liability arising out of his or her repairs to the original product or replacement parts thereto, or arising out of his or her installation of replacement parts thereto.



AIR OPERATED STRUT COMPRESSOR

OEMTOOLS™ LIMITED 90 DAY WARRANTY

Please read the following carefully

From 90 days from the original purchase of this product, OEMTOOLS will warranty this item. If you find any defect in material or workmanship, through normal usage, return it to the place of purchase or to OEMTOOLS for repair or replacement at our discretion. In order to obtain this service send your tool and proof of purchase, transportation pre-paid, to OEMTOOLS Q.A. Dept., 3580 E. Raines Road #3, Memphis, TN 38118. We will not be responsible for lost or damaged goods during transportation, please insure your package. If our inspection verifies the defect, we will either repair or replace the product at our election, or we may elect to refund the purchase price if we cannot readily and quickly provide you with a replacement. We will return repaired products at our expense, but if we determine there is no defect, or that the defect resulted from causes not within the scope of our warranty, then you must bear the cost of returning the product.

OEMTOOLS does not provide warranty for products labeled other than OEM or OEMTOOLS. OEMTOOLS will not provide any warranty for products subjected to abnormal use. Abnormal use includes, but is not limited to, abuse, accident, alteration, neglect, and unauthorized or unreasonable use or repairs. This warranty does not cover bits, blades, files, batteries, or calibration. We recommend that you maintain your tools and sharpen or replace blades, bits, files, and batteries as necessary. OEMTOOLS reserves the right to make any changes in construction or design at any time without any obligation in incorporating such changes to tools or equipment previously sold.

OEMTOOLS makes every effort to assure that its products meet high quality and durability standards, and warrants to the original purchaser that this product is free from defects in materials and workmanship for the period of 90 days from the date of purchase. This warranty does not apply to damage due directly or indirectly to misuse, abuse, negligence or accidents, repairs or alterations outside our facilities, criminal activity, improper installation, normal wear and tear or to lack of maintenance.

We shall in no event be liable for death, injuries to persons or property, or for incidental, contingent, special or consequential damages arising from the use of our product. Some states do not allow the exclusion or limitation of incidental or consequential damages, so the above limitation of exclusion may not apply to you. THIS WARRANTY IS EXPRESSLY IN LIEU OF ALL OTHER WARRANTIES, EXPRESS OR IMPLIED, INCLUDING THE WARRANTIES OF MERCHANTABILITY AND FITNESS. This warranty gives you specific legal rights, and you may also have other rights, which vary from state to state.

CONTACT US



3580 E. Raines Road, Suite 3, Memphis, TN 38118

Tel: 1-866-458-2472

www.oem-tools.com